

SINCE 1978



LEADING LIGHT

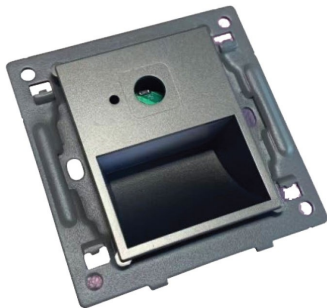
Product Datasheet

vkleadinglight.gr

VK/04571/BASE/W

Fune

Base for Step Light Led, 3000K. 1.5W. 80lm. CRI>80. IP20




IP20



Dimensions	Gallery	Downloads

Technical Specifications	
Kelvin	3000K
Power	1.5W
Voltage	220-240V
Fitting	Step Led
Type	Light
Safety class	
IP Rating	IP20
CRI	CRI>80
Lifetime	20.000hrs
Working temperature	≤35°C
PAGE	306 Decorative 2024
NICKNAME	Fune

Physical Specifications	
Material	Steel
Width	8.6cm
Length	8.6cm
Height	3cm
Cut out	8x8cm, H 5cm

Illumination Data	
Lumen	80lm
Beam angle	10°
Lighting direction	

Packing Info	
Pcs/carton	50pcs

Certification & Warranty	
Guarantee	2 years